

Please note that not all pages are included. This is purposely done in order to protect our property and the work of our esteemed composers.

If you would like to see this work in its entirety, please order online or call us at 800-647-2117.

Thugamar féin an samhradh linn

for SATB Chorus unaccompanied

Traditional Irish words

Traditional Irish melody
David Mooney, arr.

With a gentle lilt ♩ = 56

sempre mp

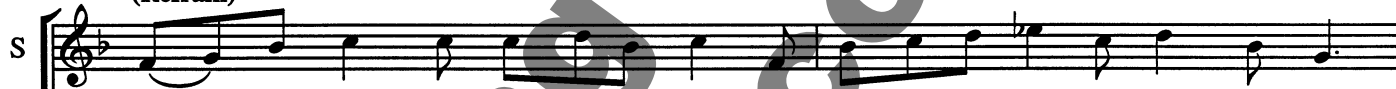


1. Bá - bóg na Beal - tai - ne, maigh - dean an tsamh - raidh, Su - as gach cnoc is síos gach gleann,
* 1. *Baw-bogue na byowl - the - neh, maw - djin on thow - ree, Soo - is gock knuck iss shees gock glown,*



Cail - í - ní mais - each - a bán - gheal - a gléas - ta, Thug - a - mar féin an samh - radh linn.
Koll - ee - nee mash - uck - a bawn - gyall - a glays - tha, Hug - a - mer fayne on sow - ra ling.

5 (Refrain)



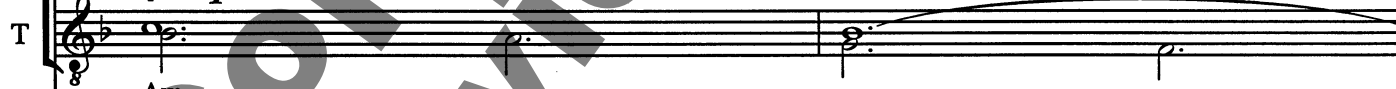
Samh - radh, samh - radh, bain - ne na ngamh - na, Thug - a - mar féin an samh - radh linn,
Sow - ra, sow - ra, bonn - ya na now - na, Hug - a - mer fayne on sow - ra ling,

sempre mp



Aw,

sempre mp



Aw,



* A phonetic singing transliteration is provided in italics below the original language.

11

Samh - radh buí o luí na gré - ine, Thug - a - mar féin an samh - radh linn.
 Sow - ra bwee oh lee na gray - nye, Hug - a - mer fayne on sow - ra ling.

samh - radh linn, Samh - radh buí o luí na gré - ine, ...samh - radh linn.
 sow - ra ling, Sow - ra bwee oh lee na gray - nye, ...sow - ra ling.

lín, Samh - radh buí o luí na gré - ine, Thug - a - mar féin e linn.
 ling, Sow - ra bwee oh lee na gray - nye, Hug - a - mer fayne e ling.

oh.....

13 (Refrain)

Samh - radh, samh - radh bain - ne na ngamh - na, Thug - a - mar féin an samh - radh linn,
 Sow - ra, sow - ra, bonn - ya na now - na, Hug - a - mer fayne on sow - ra ling,

Aw, aw,

Aw, aw,

19

aw, _____ ah. _____

aw, _____ ah. _____

cuach is na héan - laith ag sei - nm le pléi - siúr, Thug - a - mar féin an samh - radh linn.
 cook iss na hayn - leh egg sheh - nim leh play - shure, Hug - a - mer fayne an sow - ra ling.

21

(Refrain)

Samh - radh, samh - radh bain - ne na ngamh - na, Thug - a - mar féin an samh - radh linn,
 Sow - ra, sow - ra, bonn - ya na now - na, Hug - a - mer fayne on sow - ra ling,

Samh - radh, samh - radh bain - ne na ngamh - na, Thug - a - mar féin an samh - radh linn,
 Sow - ra, sow - ra, bonn - ya na now - na, Hug - a - mer fayne on sow - ra ling,

Samh - radh, samh - radh bain - ne na ngamh - na, Thug - a - mar féin an samh - radh linn,
 Sow - ra, sow - ra, bonn - ya na now - na, Hug - a - mer fayne on sow - ra ling,

...bain - ne na ngamh - na, Thug - a - mar féin an samh - radh linn,
 ...bonn - ya na now - na, Hug - a - mer fayne on sow - ra ling,

poco rall.

Samh - radh buí na nó - nín gléi - gheal, Thug - a - mar féin an samh - radh linn.
 Sow - ra bwee na no - neen glay - gyal, Hug - a - mer fayne on sow - ra ling.

Samh - radh buí na nó - nín gléi - gheal, Thug - a - mar féin an samh - radh linn.
 Sow - ra bwee na no - neen glay - gyal, Hug - a - mer fayne on sow - ra ling.

Thug - a - mar féin an samh - radh linn.
 Hug - a - mer fayne on sow - ra ling.

Aw. Thug - a - mar féin an samh - radh linn.
 Hug - a - mer fayne on sow - ra ling.

poco rall.

rall. molto

Aw, aw.

Thug - a - mar féin an samh - radh linn.
 Hug - a - mer fayne on sow - ra ling.

Aw.

Aw. Thug - a - mar féin an samh - radh linn.
 Hug - a - mer fayne on sow - ra ling.

Aw.

rall. molto

2001
2'50"

