

If I Got My Ticket

SAB, Soprano Solo, and Organ or Piano

African-American spiritual

Roy L. Belfield, Jr.

With exuberance

Soprano Solo

Soprano Alto

Baritone

Organ or Piano

f

cresc.

3

3

Also available for:

SATB, Soprano or Tenor Solo, and Organ or Piano. Order No. MSM-50-5805

TTBB, Tenor Solo, and Organ or Piano. Order No. MSM-50-2607

SSAA, Soprano Solo, and Organ or Piano. Order No. MSM-50-5112

Text: An African-American spiritual (PD).

Tune: An African-American spiritual (PD).

Music: Roy L. Belfield, Jr., newly arranged, and copyright © 2016 Birnamwood with this publication.

Copyright © 2016 Birnamwood Publications (ASCAP)

A division of MorningStar Music Publishers, Inc., St. Louis, MO

All rights reserved. Printed in U.S.A. 1.800.647.2117 www.MorningStarMusic.com

Reproducing this publication in any form is prohibited by law without the permission of the publisher.

MSM-50-5821

The various music licensing agencies do not give permission to copy this music.

Div. *sub. p*

can I ride, _____ ride _____ a-way to Heav-en in the morn - in', _____ ride _____

can I ride, _____ in the morn - in', _____

13 *Soprano Solo* *mf* with great spirit and energy

If _____ I got my tick-et, Lord,

_____ a-way to Heav-en in the morn - in'? _____ Can I _____ ride, _____ yes, _____

in the morn - in'? _____ Can I _____ ride, _____ yes, _____

16

can I ride, _____ can I ride, _____ can I ride? _____ If _____

ride, Lord, _____ ride, Lord, _____ ride, Lord? _____

ride, Lord, _____ ride, Lord, _____ ride, Lord? _____

Piano accompaniment for measures 16-18, featuring chords and melodic lines in both hands.

19

_____ I got my tick - et, Lord, can I ride, _____ ride _____

Can I _____ ride, yes, _____ ride, Lord, _____ ride _____

Can I _____ ride, yes, _____ ride, Lord, _____

Piano accompaniment for measures 19-21, featuring chords and melodic lines in both hands.

21

sub. p

— a - way to Heav - en in the morn - in', — ride —

— a - way to Heav - en in the morn - in', — ride —

sub. p

in the morn in', — I said

23

mf

— a - way to Heav - en in the morn - in'? — That

— a - way to Heav - en in the morn - in'? —

in the morn - in'? —

p

25 *with conviction*

gos - pel — train — is a - com - in' for me, — and the

mp

27

prom - ised — land — I'll gain. Oh, I

29

hear them — wheels — a hum - min', my Lord, — I'm — read -

Man.

31

- y to — board — that train. — Let — me ride. —

f

Ped.

33

Ride, Lord,— yes, ride, Lord.— Well,

f emphatically

S
A If I got my tick-et, Lord, can I ride, can I ride,

f emphatically

B If I got my tick-et, Lord, can I ride, can I ride,

f

36

in the morn in', my Lord.

can I ride? Yes! If I got my tick - et, Lord,

can I ride? Yes! If I got my tick - et, Lord,

f

38

Musical staff for voice, measures 38-39. The melody starts with a quarter note G4, followed by a half note A4, and then a quarter note B4. There is a fermata over the B4 note. The staff ends with a whole rest.

Ride, Lord! _____

Musical staff for voice, measures 38-39. The melody starts with a quarter note G4, followed by a half note A4, and then a quarter note B4. There is a fermata over the B4 note. The staff ends with a whole rest.

can I ride, _____ Heav - en in the

Musical staff for voice, measures 38-39. The melody starts with a quarter note G4, followed by a half note A4, and then a quarter note B4. There is a fermata over the B4 note. The staff ends with a whole rest.

can I ride, _____ ride _____ a way to Heav - en in the

Musical staff for piano accompaniment, measures 38-39. The right hand plays chords: G4-A4, A4-B4, and B4. The left hand plays a bass line: G3, A3, B3, A3, G3. There are fermatas over the B4 notes in both hands.

40

Musical staff for voice, measures 40-41. The melody starts with a quarter note G4, followed by a half note A4, and then a quarter note B4. There is a fermata over the B4 note. The staff ends with a whole rest.

Keep sing - in'! I *mf*

Musical staff for voice, measures 40-41. The melody starts with a quarter note G4, followed by a half note A4, and then a quarter note B4. There is a fermata over the B4 note. The staff ends with a whole rest.

morn - in', _____ *p* Heav - en in the morn - in'? _____

Musical staff for voice, measures 40-41. The melody starts with a quarter note G4, followed by a half note A4, and then a quarter note B4. There is a fermata over the B4 note. The staff ends with a whole rest.

morn - in', _____ *p* ride _____ a way to Heav - en in the morn - in'? _____

Musical staff for piano accompaniment, measures 40-41. The right hand plays chords: G4-A4, A4-B4, and B4. The left hand plays a bass line: G3, A3, B3, A3, G3. There are fermatas over the B4 notes in both hands.

43 *with spirit*

know I've been — con - vert - ed, — and I

mp

45

ain't gon - na make — no a - larm. — For my

47

soul is — bound — to — Je - sus, my Lord, — and the

Man.

49

dev - il can't do me no harm. — Lord, — let me ride. —

with a driving rhythm

f

Ped.

52 *f*

In the morn - in', — let me ride. — Lord, — let me ride —

f *deliberately*

S
A Ride, Lord, — ride, Lord. — Oh, my moth - er said,

f *deliberately*

B Ride, Lord, — ride, Lord. — Oh, my moth - er said,

55

— in the morn - in'. —

ride, Lord, —

ride, Lord, — ride —

57

Then, — let me ride! —

ride in the morn - in', Lord. —

— a - way to Heav - en in the morn - in', Lord. —

59

(1.) —
(2.) ride!

with a driving rhythm
Unison ff - mp

If I got my tick - et, Lord, can I ride, —

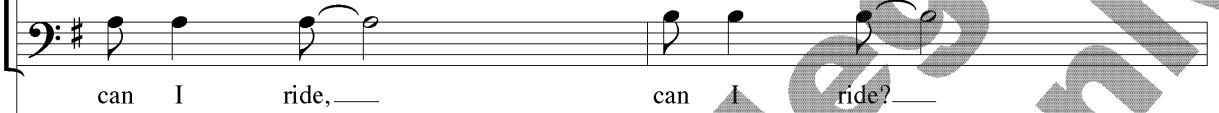
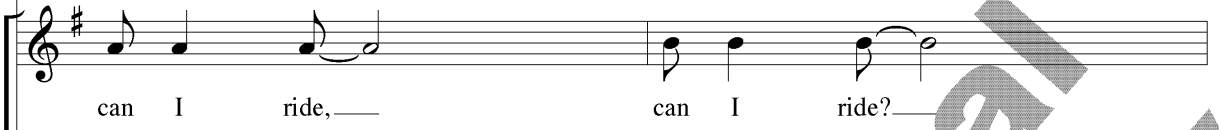
with a driving rhythm
ff - mp

If I got my tick - et, Lord, can I ride, —

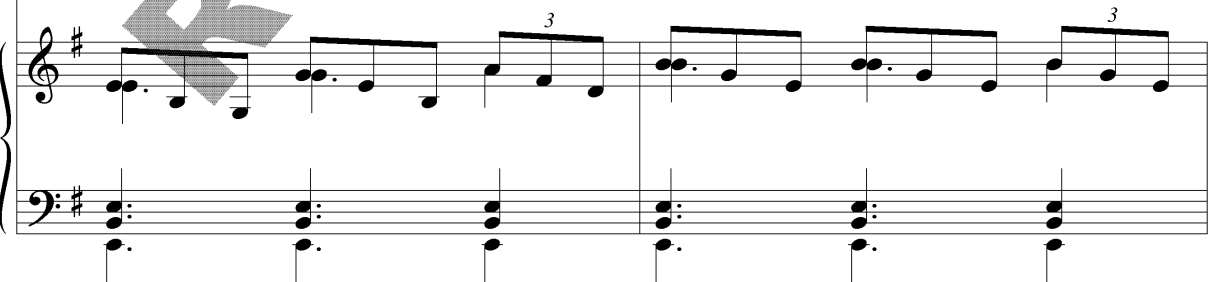
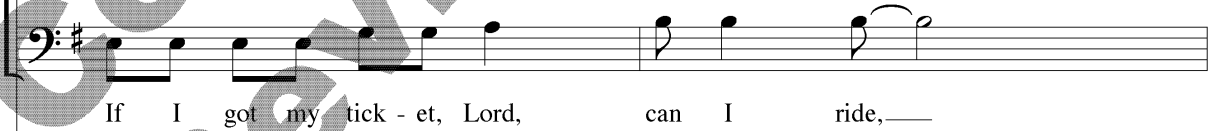
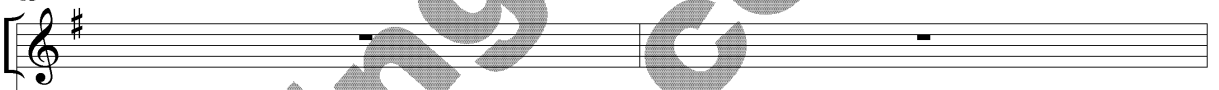
with a driving rhythm
ff - mp well marked

*Observe tie first time only.

61



63



65 *1.* *mp*
 Let me

1.
Div. ride in the morn - in'? —
 can I ride — in the morn - in'? —
 ride, — yes, in the morn - in'? —

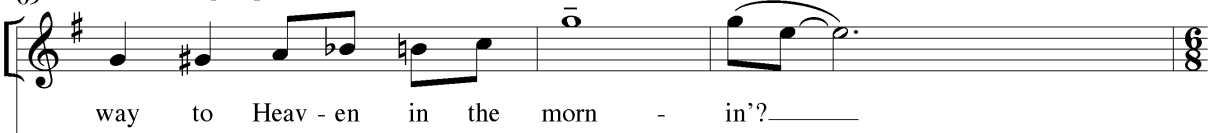
1.

67 *2.* *poco accel.*
 Ride a -

2. *mf* *poco accel.*
 ride a - way to Heav - en, — ride a -
mf *poco accel.*
 let me ride — a - way to Heav - en,

2. *poco accel.*

69 *increasing in power* *molto accel. to the end*



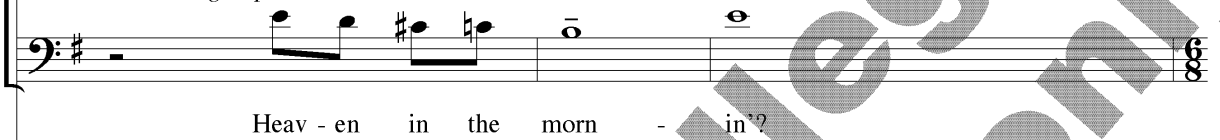
way to Heav - en in the morn - in'?

increasing in power *molto accel. to the end*



way to Heav - en in the morn - in'?

increasing in power *molto accel. to the end*



Heav - en in the morn - in'?

increasing in power *molto accel. to the end*



72 *fff*



Ride! _____

fff



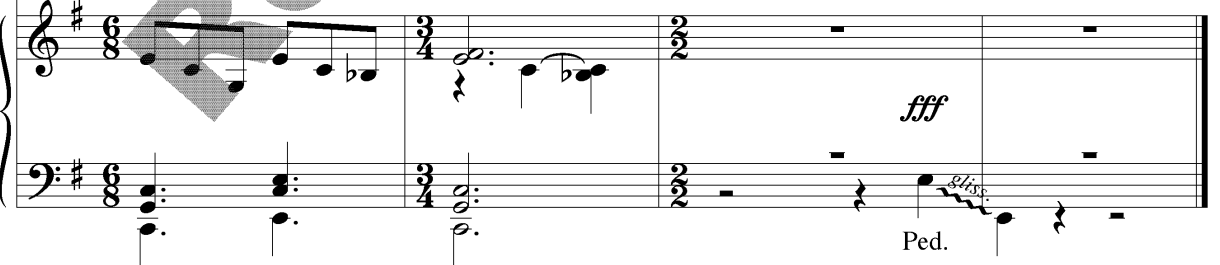
Ride!

fff



Ride!

fff



Ped.